

EMILIA 550

WALL BASIN
560 x 450mm

CODE: J3142.1.

FEATURES

- Contemporary vitreous china wall basin
- Generous, wide soap platform area
- Standard overflow with chrome trim
- Available with 1 taphole
- 7.2L bowl capacity



COMPONENTS

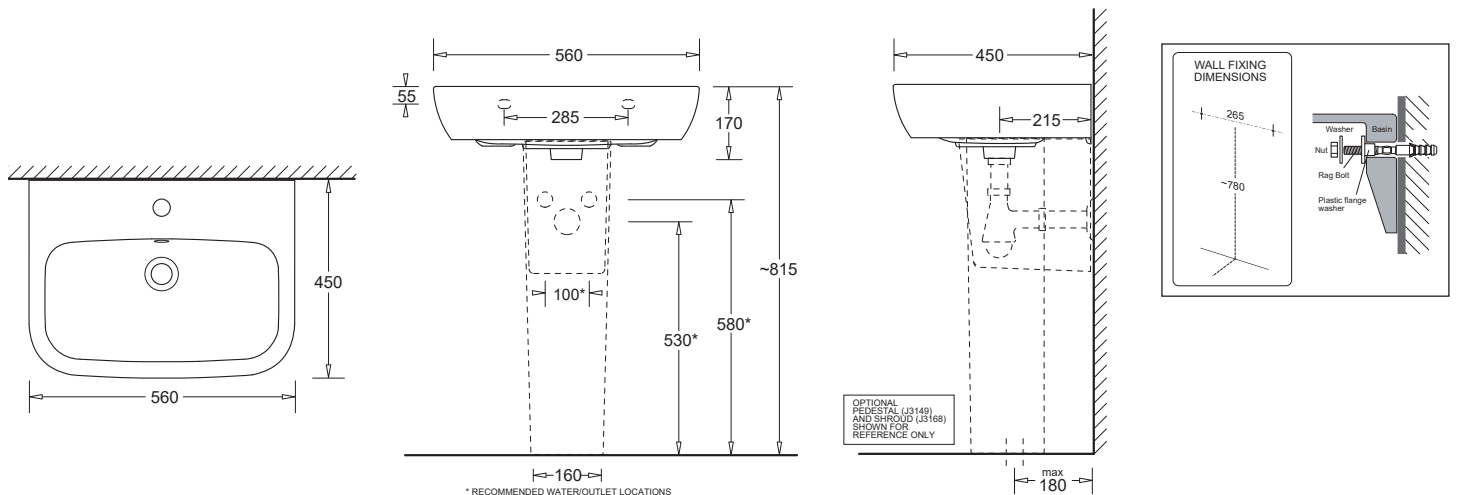
Emilia 550 wall basin	J3142.1
Overflow trim - Chrome	X063
Wall installation kit (rag bolts)	X022

WARRANTY

Vitreous china 25 years replacement
-refer to T&Cs at www.johnsonsuiss.co.nz



PRODUCT DIMENSIONS



TECHNICAL DATA SHEET

SUPERSEDES ALL PREVIOUS ISSUES

All dimensions are in millimetres and are subject to normal manufacturing variation.
As product development is ongoing BPA reserves the right to vary specifications without notice.
Bathroom Products Australia Pty Ltd ABN 87 079 297 617